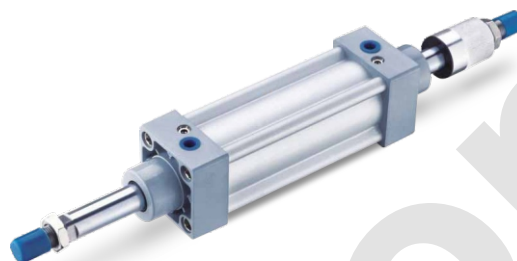


SI Series ISO6431 Standard Cylinder



SI 50 x 100

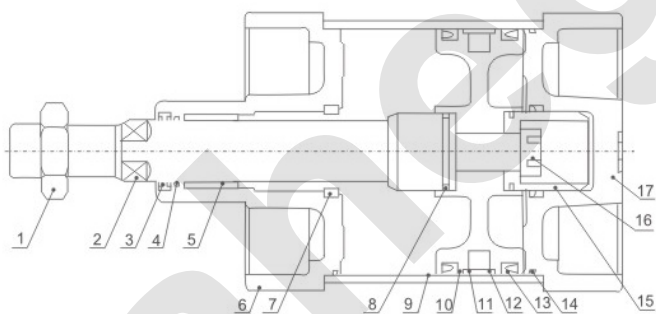


SIJ 50 x 100-25

Ordering Code

SI	50	×	50	—	25	—	S	□
Series Code SI:ISO6431 Standard Double Action Type SID:ISO6431 Standard Two Axis Double Action Type SIJ:ISO6431 Two Axis Stroke Adjust Type	Cylinder Bore 32mm-200mm		Stroke		Adjust Stroke 25:25mm 50:50mm 75:75mm		Magnet Code Blank:Without Magnet S:With Magnet	Fixed Type Blank:Normal type LB:Front and back fixed type FA:Front cover fixed type(Front Flange Type) FB:Back cover fixed type(Back Flange Type) CA:Back cover fixed type (Single Earring) CB:Back cover fixed type(Double Earring) TC:Central trunnion type TC-M:Central trunnion type attaching foot seat

Internal structure



NO	Designation	NO	Designation
1	Piston Rod Nut	10	Piston
2	Piston rod	11	Wearing
3	Front cover seal ring	12	Magnet(Optional)
4	O-Ring	13	Piston O-Ring
5	Bearing	14	Pipe wall O-Ring
6	Front cover	15	Damping
7	Buffering O-Ring	16	Hex socket screw
8	Piston rod O-Ring	17	Back cover
9	Barrel		


Specification

Bore(mm)	32	40	50	63	80	100	125	160	200
Motion Pattern	Double Action								
Working Medium	Air								
Fixed Type	Normal type FA type FB type CA type CB type LB type TC type								
Working Pressure Range	0.1~0.9MPa								
Ensured Pressure Resistance	1.35MPa								
Operating Temperature Range	-5~70°C								
Operating Speed Range	50~800mm/s								
Buffer Type	Adjustable Buffer								
Buffer Stroke					24			32	
Port Size	G1/8"	G1/4"		G3/8"			G1/2"	G3/4"	

SI Series ISO6431 Standard Cylinder

Cylinder theory output 

Cylinder inside Diameter	External Diameter of Piston Rod	Motion Pattern	Compression Area(cm ²)	Air Pressure(kgf/cm ²)									
				1	2	3	4	5	6	7	8	9	
32	12	Double Action	Press Side	8.04	8.04	16.08	24.12	32.16	40.20	48.24	56.28	64.32	72.36
			Pull Side	6.90	6.90	13.80	20.07	27.60	34.50	41.40	48.30	55.20	62.10
40	16	Double Action	Press Side	12.56	12.56	25.12	37.68	50.24	62.80	75.36	87.92	100.24	113.04
			Pull Side	10.55	10.55	21.10	31.65	42.20	52.75	63.30	73.85	84.40	94.95
50	20	Double Action	Press Side	19.63	19.63	39.26	58.89	78.52	98.15	117.78	137.41	157.04	176.67
			Pull Side	16.49	16.49	32.98	49.47	65.96	82.45	98.94	115.43	139.92	148.41
63	20	Double Action	Press Side	31.17	31.17	62.34	93.51	124.68	155.85	187.02	218.19	249.36	280.53
			Pull Side	28.03	28.03	56.06	84.09	112.12	140.15	168.18	196.21	224.24	252.27
80	25	Double Action	Press Side	50.26	50.26	100.52	150.78	201.04	251.30	301.56	351.82	402.08	452.34
			Pull Side	45.36	45.36	90.72	136.08	181.44	226.80	272.16	317.52	326.88	408.24
100	25	Double Action	Press Side	78.53	78.53	157.06	235.59	314.12	392.65	471.18	428.82	628.24	706.77
			Pull Side	71.47	71.47	142.94	214.41	285.88	357.35	428.82	500.29	517.76	643.23
125	32	Double Action	Press Side	122.72	122.72	245.44	368.16	490.88	613.60	736.32	859.04	981.76	1104.48
			Pull Side	114.68	114.68	229.36	344.04	458.72	573.40	688.08	802.76	917.44	1032.12
160	40	Double Action	Press Side	201.06	201.06	402.12	603.18	804.24	1005.30	1206.36	1407.42	1608.48	1809.54
			Pull Side	188.49	188.49	376.98	565.47	753.96	942.45	1130.94	1319.43	1507.92	1696.41
200	40	Double Action	Press Side	314.16	314.16	628.32	942.48	1256.64	1570.80	1884.96	2199.12	2513.28	2827.44
			Pull Side	301.57	301.57	603.14	904.71	1206.28	1507.80	1809.42	2100.99	2412.56	2714.13

Stroke 

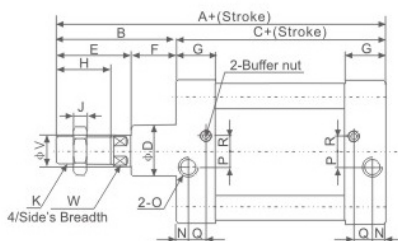
Bore(mm)	Standard Stroke	Max.Stroke	Permissible Stroke
32	25 50 75 80 100 125 160 175 200 250 300 350 400 450 500	1000	2000
40	25 50 75 80 100 125 160 175 200 250 300 350 400 450 500 600 700 800	1200	2000
50	25 50 75 80 100 125 160 175 200 250 300 350 400 450 500 600 700 800 900 1000	1200	2000
63	25 50 75 80 100 125 160 175 200 250 300 350 400 450 500 600 700 800 900 1000	1500	2000
80	25 50 75 80 100 125 160 175 200 250 300 350 400 450 500 600 700 800 900 1000	1500	2000
100	25 50 75 80 100 125 160 175 200 250 300 350 400 450 500 600 700 800 900 1000	1500	2000
125	25 50 75 80 100 125 160 175 200 250 300 350 400 450 500 600 700 800 900 1000	1500	2000
160	25 50 75 80 100 125 160 175 200 250 300 350 400 450 500 600 700 800 900 1000	1500	2000
200	25 50 75 80 100 125 160 175 200 250 300 350 400 450 500 600 700 800 900 1000	1500	2000

■ If you need special stroke, please Tell us, we can make according your require.

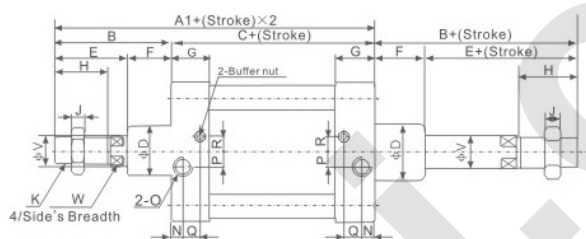
SI Series ISO6431 Standard Cylinder

Overall Dimensions

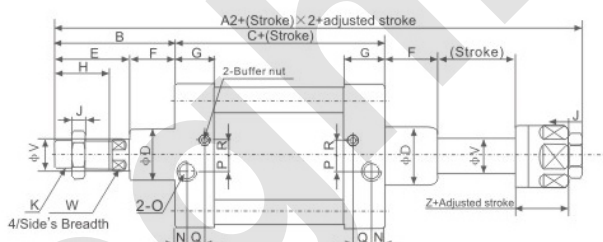
SI



SID



SIJ



Dimension Sheet

Bore/Symbol	A	A1	A2	B	C	D	E	F	G	H	I	J	K	L
32	142	190	185	48	94	30	32	16	27.5	22	17	6	M10 × 1.25	M6
40	159	213	205	54	105	35	36	18	29	24	19	7	M12 × 1.25	M6
50	175	244	231	70	105	40	45	25	30	32	24	8	M16 × 1.5	M8
63	190	259	245	70	120	45	46	24	31	32	24	8	M16 × 1.5	M8
80	214	300	283	86	128	45	56	30	35	40	30	10	M20 × 1.5	M10
100	227	316	298	89	138	55	57	32	36	40	30	10	M20 × 1.5	M10
125	278	396	368	118	160	60	73	45	46	54	41	10	M27 × 2	M12
160	332	484	448	152	180	65	94	58	50	72	55	18	M36 × 2	M16
200	337	494	452	157	180	75	100	51	51	72	55	18	M36 × 2	M16
Bore/Symbol	N	O	P	Q	R	S	T	V	W	Z				
32	13.5	G1/8"	4	7.5	7	47	32.5	12	10	21				
40	16	G1/4"	6	8.5	9	53	38	16	13	21				
50	15.5	G1/4"	8.5	7.5	7.5	65	46.5	20	17	23				
63	16.5	G3/8"	7.5	8.5	9	75	56.5	20	17	23				
80	16.5	G3/8"	11	8.5	13.5	95	72	25	22	29				
100	18.5	G1/2"	13.5	9.5	14.5	115	89	25	22	29				
125	23	G1/2"	14	12	14	140	110	32	28	35				
160	25	G3/4"	15	12	20	180	140	40	36	40				
200	25	G3/4"	15	12	20	220	175	40	36	40				